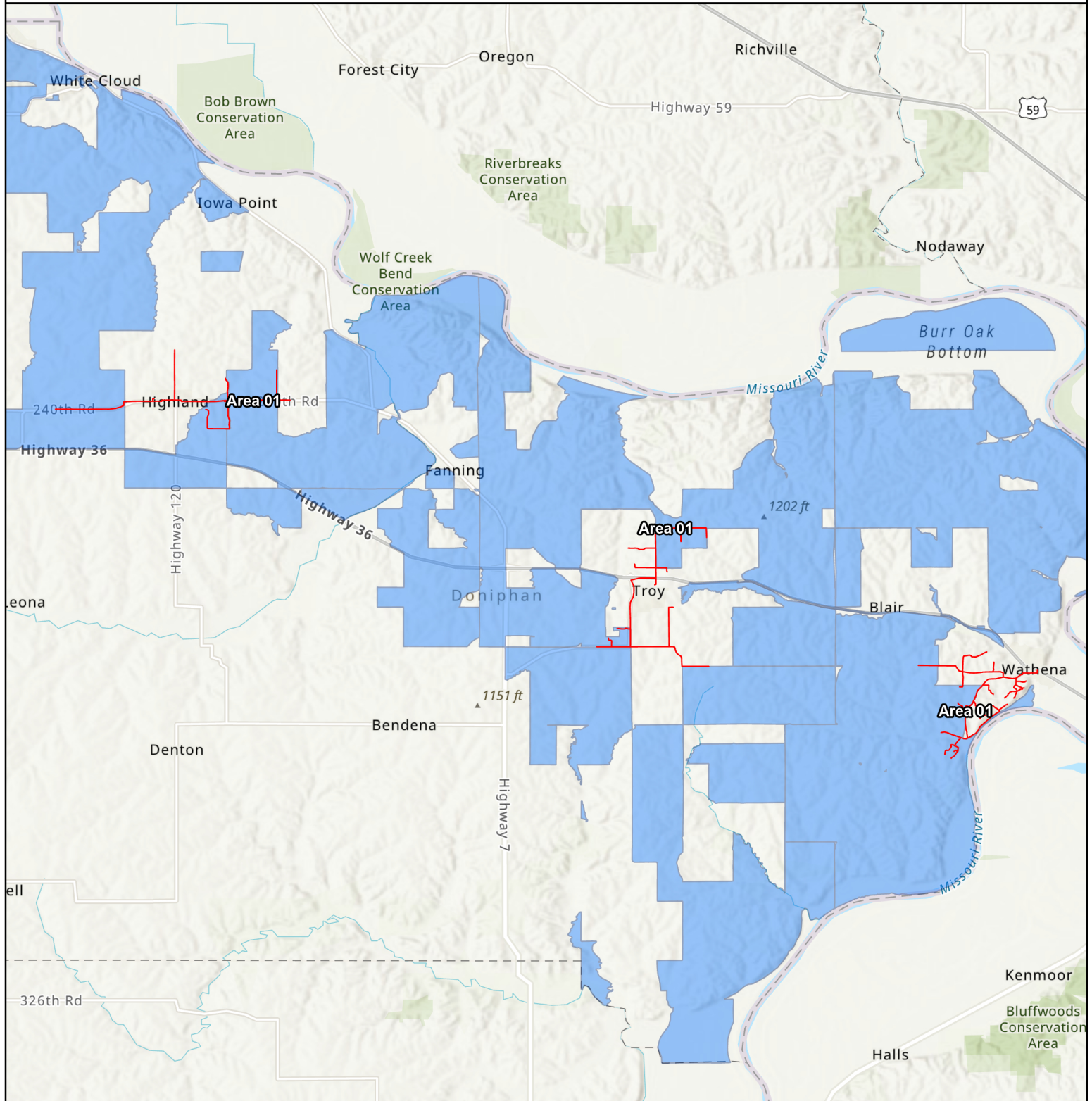


# Kansas CPF Challenge

## Awarded RDOF / CAF II Block



**Applicant:** Doniphan County

**Project:** Area 01


Missouri Dept. of Conservation, Missouri DNR, Esri, HERE, Garmin, SafeGraph, METI/  
NASA, USGS, EPA, NPS, USDA, Esri, NASA, NGA, USGS

**Challenged Fiber Projects**

 AMG Technology - RDOF Obligation

 AMG Technology - CAF Obligation

**Date:** 9/7/2022

0 1.7 3.4 5.1 6.8 8.5  
 Miles